

BULENDI HEALTHY LIFE VILLAGE

OUR WORLD VIEW AT BULENDI HEALTHY LIFE VILLAGE

The service sector has existed almost since the existence of civilized societies.

The common thought in service is development and change. Developing, sharing and transferring knowledge, which is the basic rule of progress, also forms the basis of BDK Group Financial Consulting. BDK Group Financial Consulting works to serve humanity with its humanistic structure and to transfer knowledge to the future.

OUR POINT OF VIEW

BDK Group believes that the financial consultancy, real estate and real estate-based financing sector will gain great importance in Turkey. For long years already it is at the top of the list of Turkish economy. Real estate-based sectors are also indispensable parts of the world economy. The increase in the use of real estate as a financial resource in our country is the most important indicator that supports this idea. We see that foreign capital does not only purchase real estate, also professional service companies are positioned in our country.

The main purpose of BDK Group Financial Consulting is to reach investment targets in the most accurate way by using the existing conjuncture resources in the most efficient way. Which set out with the promise of "Investment is in the safe hands" and believes in the power of domestic capital .

BDK Group Financial Advisory; adds value to the investment by combining information and technology.

OUR VISION

Our vision is to be a brand by creating the difference without saying "We are different"; adding value, maximum benefit and minimum commercial concern and to build structures which preferred by who know how to choose.

OUR MISSION

The most important need of human history: the need for shelter; our mission is transforming safe and aesthetic buildings that we have produced with an innovative architectural understanding into living spaces where you can "enjoy life"... Because we do the best in sector and we know what you need...!

As BDK Group Construction, we produce, environmentally friendly, safe places where you can live in peace and compatible with the changing and developing city life. We provide maximum satisfaction by contributing to the quality of life.

Crossing our paths with the right solution partners, from design to architecture, from planning to production, using the most advanced technology and the most suitable materials. Our executives, staffs and solution partners always working with the highest quality by conducting harmonious partnerships with our partners .We provide the conditions. We know very well that; POWER comes from unity...

BULENDİ SOCIAL AND ACTIVE LIFE

Say hello to a unique life that you have never met before at BULENDİ Healthy Living Village ! When we say healthy life, we are not talking only about physical health, but also a quality life in which people feel healthy in their soul and inner world. From sports to art, from cultural discoveries to details that connect people to nature, at BULENDİ, we offer solutions to meet all your needs and have a pleasant time. Here we sometimes revive old habits and sometimes open the door to new pleasures.

We did theaters and open-air cinemas so that you never lose the pleasure you get from the cultural activities.

We concantrate on the rush of work, children, the rush of life, then we notice the years flow so fast. Sometimes people can't even have time to do the activities that they enjoy the most. We use sentences like “It's been 15 years since I last went to the theater” or “I always wanted to learn how to do painting”.

In BULENDİ this kind of sentences are overridden. Whether you have a pleasant time to watch a play in the theater or enjoy the special tastes with a friendly service. Dine with your friends in our restaurant where it is served, whether it's a hobby be the most talented face of their workshop or spend time with your loved ones ... Whatever comes to your mind, its private areas are just a few steps away !



Since 2000, it has been in communication with its customers with a humanistic perspective beyond shopping with its ethical approaches in the construction industry. Eren Yapi Mimarlık Engineering in the Marmara Region and BDK Group Financial Consulting Tic.A.S with the idea of Joint Investor and which has the idea of "Strength comes from their work; signed a joint project on 22,10,2020 for a brand new project... On behalf of all humanity, we have rebuilt the benefits of ecological life into our lives with the extraordinary life village.



We have opened workshops that you will enjoy. Within the scope of the project, by the three-day program Workshops, Events and Training will be held. Leadership Program for Child and Youth Studies. Join us now! Contact us. take action . Be with us to progress on this path. Take your place in the healthy life village with www.bulendi.com and request the details, don't be late.

Eren Structure and Architecture Company is focus on the environment of buildings and their relationship with people. The aim of sustainable architecture is to produce buildings with minimum energy consumption and minimum damage to the environment. One of the most important features of sustainable architecture is to give priority to renewable energy sources and to use energy effectively in the area where it is located. Sustainable architecture is architecture that aims to minimize the environmental impact of buildings in the use of materials, energy, development space and ecosystem in general. Sustainable architecture uses a conscious approach to energy and ecological conservation in the design of the built environment .

For BDK Group the idea of sustainability or ecological agriculture is to ensure that our use of currently available resources to not have detrimental effects on our collective well-being or not to make it impossible to obtain resources for other applications in the long run.



In Bulendi Handicraft Workshops you have all to design where you can reflect your free spirit or build your own ideas. You will regain your rhythmic life energy in to your whole soul in the life village. In the unique nature of the Kazdag Mountains, you will feel safe and your whole body's cells have been renewed.

We have prepared some of the special areas for you to get rid of your past in the nature with the oxygen tank in the Kazdaglar to make you live the most meaningful times in your life. We have opened a country cafe for those who miss coffee.



Our project is specially designed for you to suspend the times you always say tomorrow,in this way you add your hobbies for your and your close friends's life.

We also built a golf course for golf pleasure.



How many times have you experienced the most beautiful feelings in the world, how many novels have you read? We are determined to rebuild your life from the ground up.

We opened a library where you can read rare books.



Have you ever thought about how many beautiful Sundays have passed in our lives that we wanted to enjoy but we couldn't? We turned every day into a Sunday from the vegetables you grew from your own garden for you. We have reserved a picnic area to revive the picnics that are enjoyed on Sundays.



We made playgrounds for children.

We have carefully designed every moment for your children and grandchildren. We have prepared active playgrounds for every day with a childish excitement and hope.



Wouldn't you like to start every day with the help of our most successful teachers and doctor's control, which is necessary to calm and relax our whole body and soul in our joints with tension and resentment every day of our lives? Therapeutic massages are waiting for you to calm down and relax.



There is a swimming pool for those who cannot get away from the beauty of the water. Think about how much we say water is life and take it into our lives.... Even our body has 60% of water. Swimming will make our whole body and body always fit and renewed . The most beautiful swimming activity is specially designed for you.



There is also a traditional Turkish bath where you can relieve the tiredness of the day.



You will come out with a healthy breath from the salt rooms that are the solution to respiratory problems.



We have straw in our roomswill open the bronchi by sweating for who find the sauna hot.



Real tandoor ovens where you can cook your own traditional meals.



We also thought of places where your pets can throw their energy away.



Rest your soul always. Wishing you wake up to peaceful and happy tomorrows with your spouse by music concerts and courses are waiting for you.



We have prepared nature, and culture walks for those who can't get enough of travelling .



You will not be able to understand how the time passes with enjoyable intelligence games that you will play with your friends.



We have created a different stress relief environment for people who love paintball.



We have also prepared a suitable environment for people who love horse riding.



HEALTH IN BULENDI

Health is the most precious treasure of human being. Moreover, with today's opportunities, it is possible to lead an energetic, happy and enjoyable life. 24/7 supervision of doctors and nurses, psychologist, physiotherapist and dietician when needed... Ready ambulance for 24 hours a day... All with the BÜLENDİ Health Group assurance of.



We have designed exercise areas to keep you fresh all the time.

We have created a system where specialist doctors and nurses will be available 24/7. The most beautiful wealth on earth is our health. And we are at your service with our expert staff so that you are always safe.



Psychologists or other doctors are available when you need special support.



Natura in BULENDI

We learn a new information about natural life every day. Ecological and organic products, natural farming practices, natural recipes... In Bulendi is possible to eat fruits and vegetables that you have grown with your own hands and more .

We established a farm for you to remember the sound of lambs and cows in the village with the naturalness .



We have opened courses on food so that the smells coming from the kitchen will always last.



Hobbies that you never experienced in your life. We have added a hobby garden to your home so you can cultivate as you wish always with your positive energy.



We also have a Windmill to grind your wheat in a natural environment.



We have coops for collecting organic eggs of our village.



Our barn where the freshest milk of our village is milked.



We also prepared a field that we cultivated together and where we would grow organic products to eat.



It is available in our therapy environments with private teachers where you can be comfortable.



SERVICE IN BULENDI

You can find the services and facilities you need in the most comfortable way. We brought all the services together that you can think. Whether you're ordering food for the house or for a renovation job call the staff, or place your daily orders if you want... We thought every details meticulously so that you can live your life as you wish. If you have a different request, we are working with our strength to fulfill them . What is important to us: make everything easier for you, to offer a more comfortable and happier life. That's why our services are unlimited!

OUR SERVICES

- House Cleaning
- Home maintenance/repair service
- Home meal service
- Restaurant
- Cafeteria
- Market
- ATM
- Pharmacy support services
- Dry cleaning
- Hairdresser
- Laundry
- Daily fresh milk and eggs from the village farm
- 7/24 Our successful healthcare team and clinic at your service

A DAY IN THE HEALTHY LIVING VILLAGE

- You can go for a morning walk and stop by the hobby garden.
- You can ask a private vehicle for the trip you want to make out of the village next day.
- You can watch a movie with friends in the evening.
- You make reservations for the guest house for family members who will come on the weekend .
- You can go for a family walk in the evening at outdoor.
- You can enjoy the cinema in the private movie theater.
- You can have a pleasant time with your family. (hobby garden,chickens feeding...) With breakfast prepared by your personal assistant in your own home you can start the day.
- You can visit your private doctor whenever you wish.
- You can attend physical therapy at the pool in the afternoon.
- You can take a morning walk with your personal assistant. You can monitor your health with remote smart wristband.
- Ecological Anti-Toxic Sports Center
 -
 -
 -
 -
 -

-
-
-
-

Ecological production is provided by electricity solar energy.



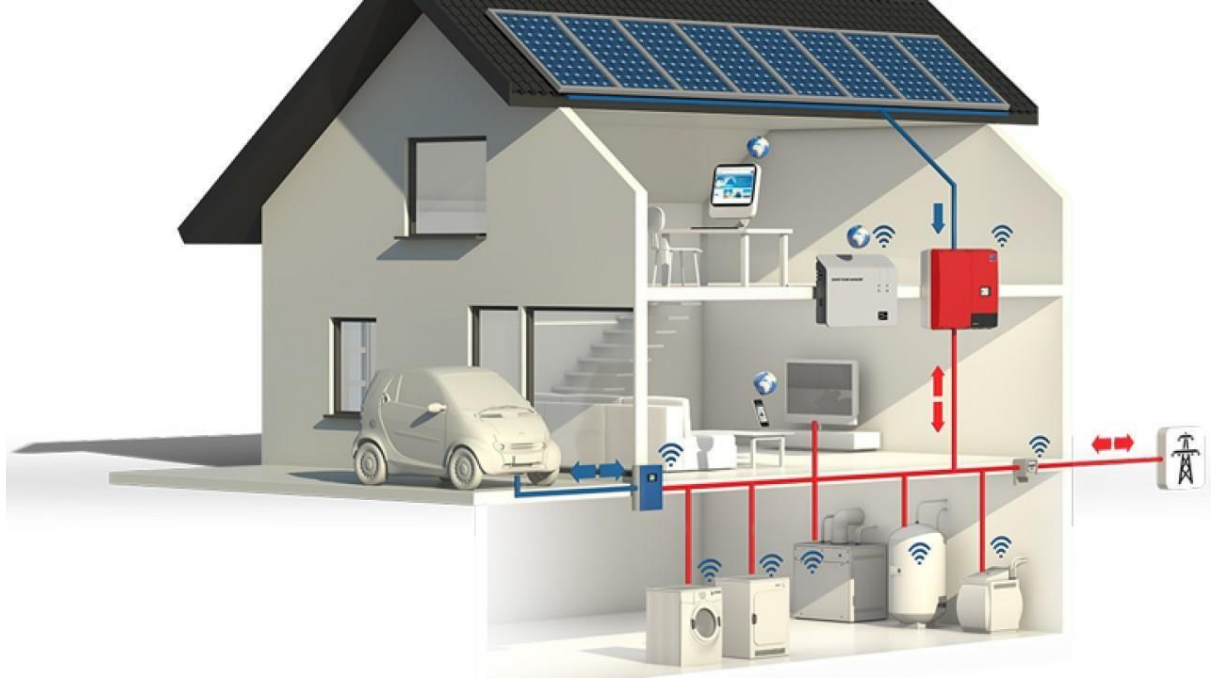
We supply our water from natural sources in Kaz Mountains.



We have prepared our all buildings as smart buidings contemporary.



We used voice and remote motion sensors.





With every day you are in this project, your feelings of gratitude and excitement in life will increase, and your happiness will be our pride for our life line. Thank you for the peace of eternal nature.

SPECIAL ANALYSIS REPORT OF THE STRUCTURES

Bülent Demirel, idea owner of the life village

The area where the units will be designed will be **250.0000 square metres** in total plan , and a total construction area will be **50.000 square metres** . It will include **500 units of mansions** and **500 units of bungalows**. The list of materials to be used will be applied as follows :

In the general application area of the Life Village, there will be guest lounges, health center, restaurant, village mansions, main center building, Bank ATMs for common use.

The common use areas like market, shopping center, fitness etc. in relation to village mansions will be established a total of **105.000 square metres** and the life village will be a candidate to be the favorite of the Kaz Mountains and Europe.

The total common areas, including the guest parking lots will serve as a foundation with European financial resources.

Land and construction cost of 500 mansions -320.000.000 €

Land and construction cost of 500 bungoluvs -200.000.000 €

Cost of 200-bed dialysis center hospital -36.000.000 €

Construction cost of a 200-bed hospital, where at least 60 doctors, 200 assistants and nurses will work -64.000.000 €

Construction cost of 2 emergency response health centers
-2.000.000 €

The cost of a 2-storey rehabilitation school to be built on a 3000 m2 area by the foundation, which will provide free education to all children in the region -60.000.000 €

Cost of Sports Activity Complex and Anti-Toxic Ecological Center
-160.000.000 €

The cost of the construction of a 2000-person nursing home for the poor elderly people of the region , which will serve free of charge by the foundation.
-100.000.000 €

Cost of 2 petrol stations	-13.000.000 €
Cost of shopping mall	-6.000.000 €
Cost of 5 restaurants which will be 24/7 active	-5.000.000 €
Cost of 4 Turkish baths	-3.000.000 €
Cost of 4 hay rooms	-4.000.000 €
Cost of 4 fitness rooms	-2.000.000 €
Cost of 4 full-activ Finnish baths	-20.000.000 €

Total cost of this project: -1.004.000.000 €

Total project cost (one billion four million euros)

The payback period of the total project has been calculated as 15 years (fifteen years) from the date of use of the project.

The delivery time of the project in active using is 5 years (five years).

The total number of people to be employed in this social life village will be 1200, and life will be provided 7/24 in 3 shifts and every detail will be thoughtfully designed and implemented.

The healthcare team will provide active service 7/24.

1. Steel mesh will be used in dimensions of 20x20x16x12x8.
2. Concrete quality will be used in C 35 in all construction works and in C 30 in garden walls.
3. The walls will be ytong (gas concrete) material , in size of 35x25x100 and the garden wall applications will be made of in size of 20x20x5 natural slate stone integrated with the facade.
4. The roof will be made in accordance with wood and glass wool, European tile protection will be used.
5. Exterior Plaster and Thermal Insulation will be made in accordance with European standards and minimum in the size of 4x4cm xps + natural stone will be used .
6. As a frame 80/80 heat sound comford application will be made
7. The main entrance doors will have fingerprint reader and wifi connection opening and closing will be done by airless system.
8. Garden landscaping and grassing paths will be created with cobblestones, garden planting and chat areas.

9. The roof parts of all buildings will be integrated with Energy Panels, and the working parts of the heat pump and heating thermo combi boiler will be provided.

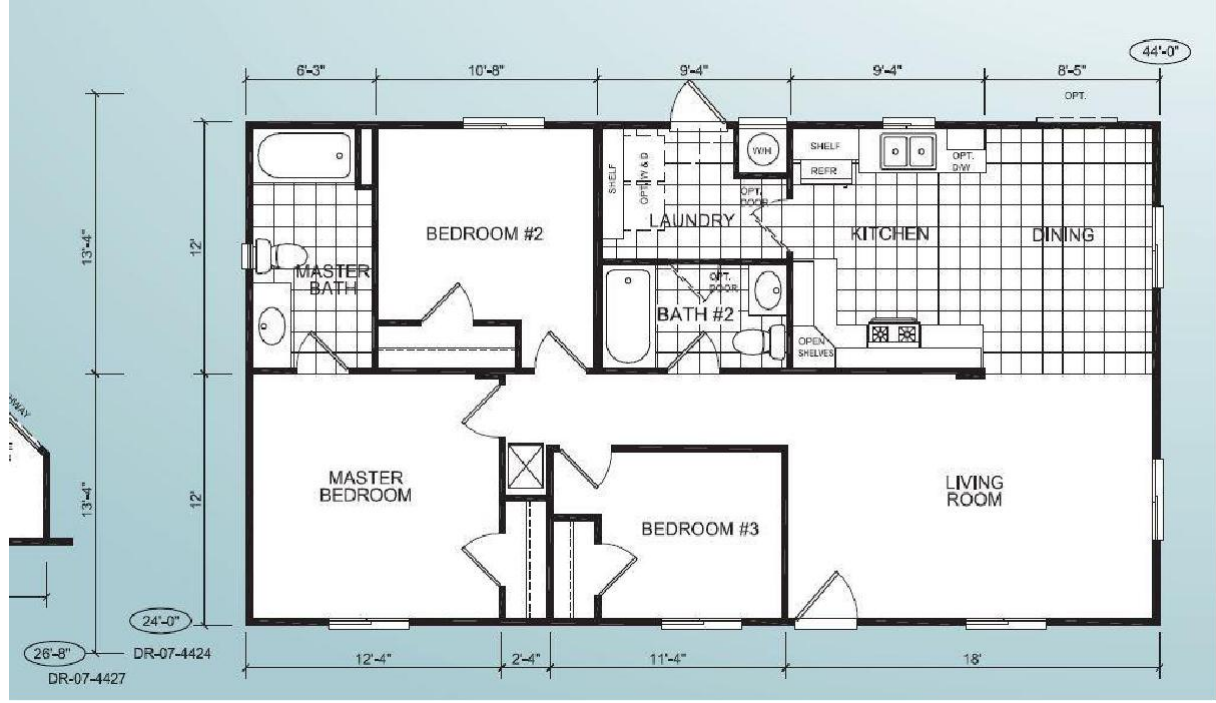
10. You will realize the taste of natural life flowing from your tap every day with the analysis system that distinguishes the drinking water we supply from Kaz Mountains in accordance with European standards..

11. Our aim and main standard is to achieve success with protecting the ecological environment in the nature in our system, which is ensured to make project works in harmony with the smart compact, to today's ultra-luxury concept from start to finish.

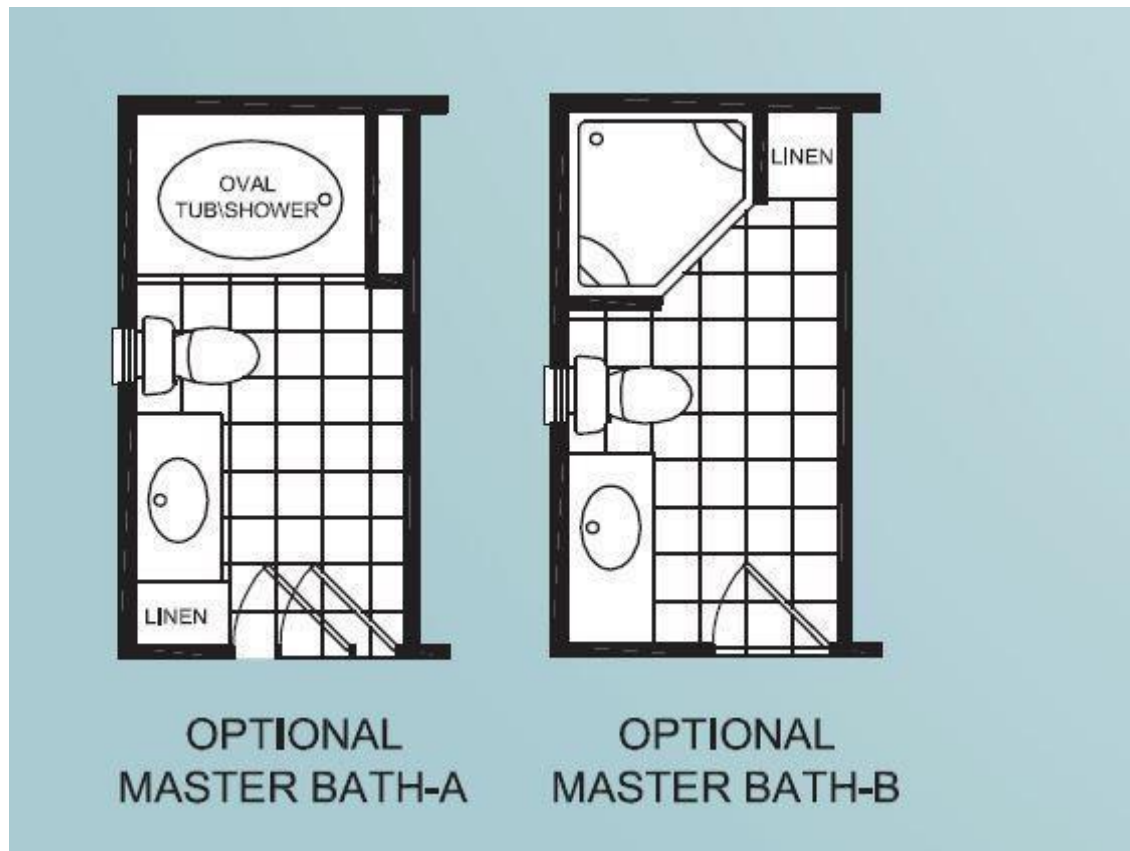
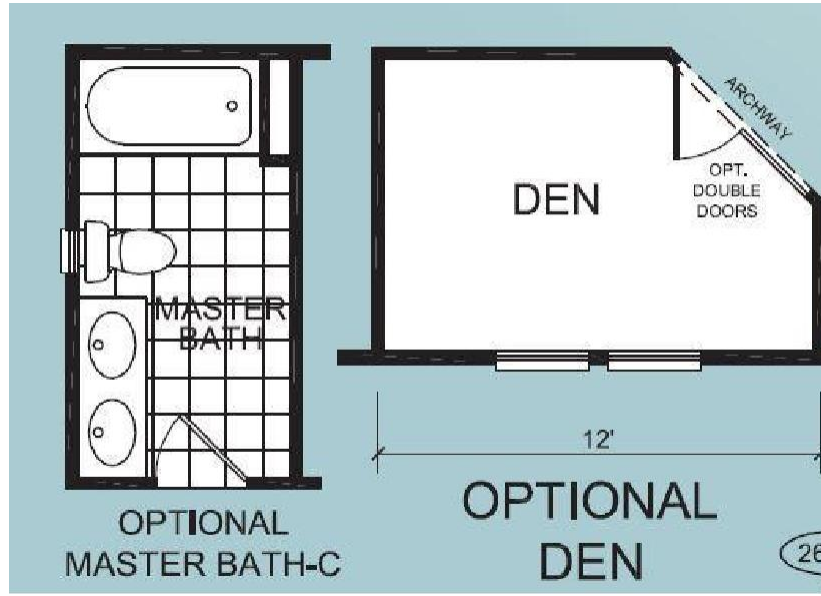
12. Our structures and it's details, which are in harmony with the modern design, are compatible with the project concept and they are in European standards.

13. We know so far, many of national and international stadiums and sports structures have been designed as Ecological Sports Activity Centers. But we claim "We are building Turkey's first ecological stadium". We are building a sustainable structure for our athletes that will generate its own energy with the solar panels on the facade of the stadium and will include systems for isolating rain and snow water. In addition, an Anti-Toxic Ecological Sports Center befitting the region has been specially designed.





















PROJECT DETAILS

This project has been specially designed for international investors and has been financed .

It is presented in the annex of the main contract .

It has been specially designed for all investors and has been implemented and designed as 6 types of structures .

All titles and areas in the main contract, which are compatible with European credit, are stated in the visual design project annex in written form.

It has been presented to all authorized units and financial units .



Bulendi life village offers special support to our football, and by allocating 20 decares of space in accordance with the protocol signed with the club presidents of 4 big companies, the anti-toxic ecological environment special to the football federation will contribute to sports and to contribute to science and artistic production, with a sense of social responsibility, with advanced research and problem-solving skills. Sports are given importance in line with the mission of raising broad-minded individuals who are open to multi-disciplinary approaches. In addition to the necessity of sports for a healthy life, it is thought to be the most important complement to the physical and social development of our students in their busy academic life. Basketball, volleyball, handball, indoor football and table tennis can be played at Bulendi Life Village Sports Facilities.

In the Sports Facility, which has sports such as sports and mini fitness work areas, there is a semi-olympic indoor swimming pool and a mini fitness room.

It hosts our sports teams and the clubs of the competitions organized by the Turkish University Sports Federation to do their natural training.



Our Life Village is located on Sameteli pond dam and its surroundings; Çanakkale, Çan, Biga, Edremit, Bandırma, Yenice, Balıkesir, İzmir the highways. Its proximity to major cities, natural areas, domestic tourist hospitality and other important assets highlight the tourism potential of this area. Designing the region with the concept of “EcoVillage ” concept line with the potentials of the region such as agriculture and animal husbandry; will ensure the physical and social recovery of the area with a sustainable and minimal intervention to nature.

One of the aims is to develop a design that will keep the area alive every season, beyond hosting seasonal tourists. In addition, it has been decided to make designs that will strengthen the project area economically, by adopting an understanding that combines both participant-oriented agriculture and accommodation by supporting agricultural activities with agrotourism. Except for rural agriculture and animal husbandry in the area, sports such as mountain walks are supported and it is aimed to make this area an "Ecological Sports Village"..

The project will develop and considered as the starting point of the design under the title of “*Anti-toxic Ecological Bulendi Healthy Sports Village*” where self-sufficient place free from toxins , the users are purified from all their bad energy, participate in production, eat healthy, breathe clean, live in contact with nature, not against nature; sustainable, zero waste based in itself.

ANALYSIS AND DESIGN PROCESS

Canakkale and an, where the seasonal population density change is high, takes most of its population from the surrounding cities on a daily basis or on the basis of Natural Spa. The main goal of the project is to create a sustainable rural tourism and life model that keeps the area active for 4 seasons by enriching the existing activities and adding related new activities without harming the nature of the area, and to design an antitoxic living space.

Natural data, settleability and SWOT analysis were performed (Figure 1). According to these analyses, the current activities of the area; examined under the titles of recreation, education, trade, accommodation and agriculture.

Strengths of the field in line with SWOT analysis; It has been determined that it has natural resources and undisturbed natural environment, clean lands that can be used for organic agriculture, and being close to big cities.

Weaknesses are; The realization of tourism activities in a short period of time, unconscious and unplanned structuring put pressure on the natural character of the area in the eastern part.

In terms of opportunities, the region has natural and unspoilt rural areas and an important rural tourism potential, the thermal springs are the Natural Activity of the Region, it hosts villages with high rural landscape values, the region allows for different touristic activities and nature-based tourism is increasingly popular.

The threats are; The fact that the agricultural lands are very fragmented, the region gives out migration, and the villages that have oxygen storage in the Kaz Mountains only serve local tourists from Edirne, Balıkesir, İzmir and Istanbul in July, August and September.



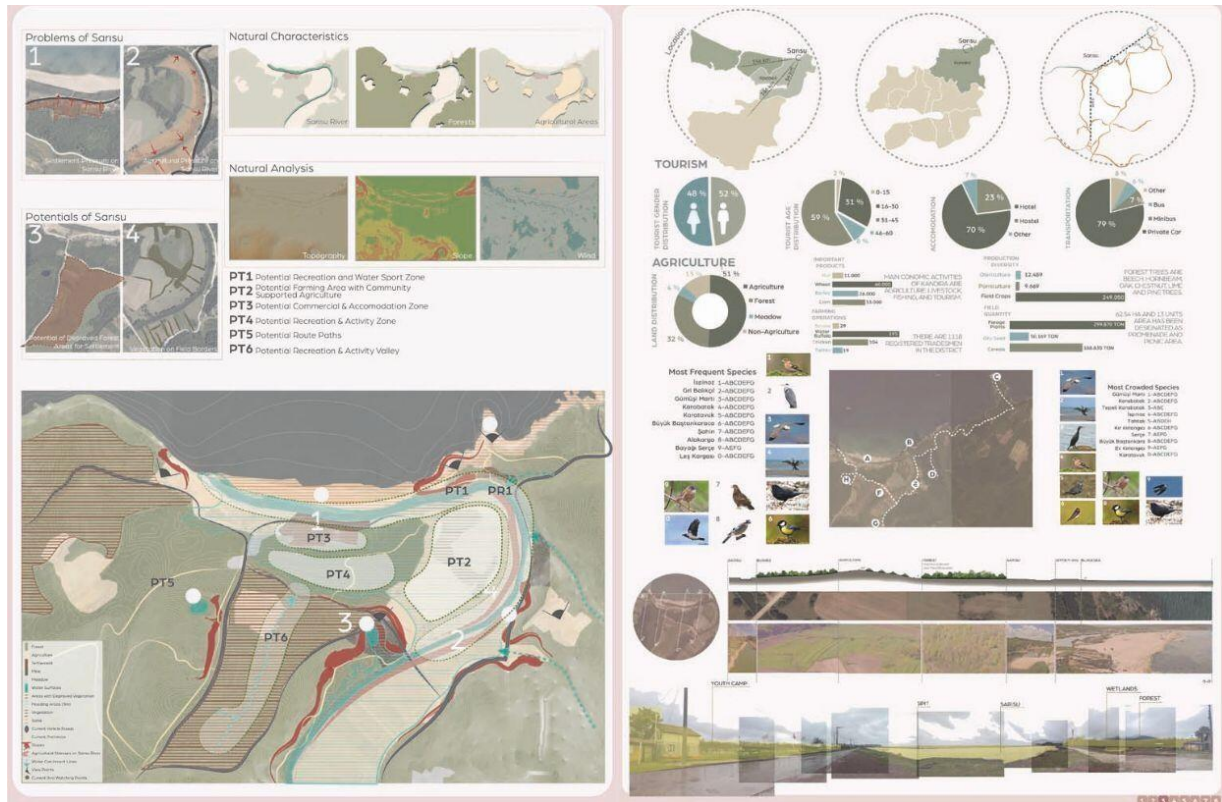


Figure 1. Anti-Toxic Analysis Studies

In the 1/2000 plan, it was aimed to suggest new activities to enrich the existing activities and use the potentials in order to develop a four seasons active ecological Bulendi Life Village, sports center and a sustainable life model, centered on the point where Sarsu Stream empties into the sea (Figure 2). While creating the transportation system, the existing transportation network was used, but the roadway that puts pressure on the İzmir Highway Opened New Opportunities for All Guests. A public transport-oriented transport system has also been proposed. Pedestrian and bicycle routes, trekking route and bird watching route have been designed as integrated with the planned activities and accessible to the whole area. Water sports, meditation, bird watching, winter sports, nature walks, festivals; activities such as sports education, elderly care and nursery program, workshops are suggested. Existing commercial areas; restaurant, cafe and sports store Sinama social activity programs have been added. Konaklar Bungolow, which is used as a four-season accommodation function and camping; It has been enriched under the titles of permanent settlements, condominiums, boutique eco hotels, dormitories, camping areas, and interventions have been made to encourage locals and visitors to agro-tourism, agriculture and animal husbandry activities.

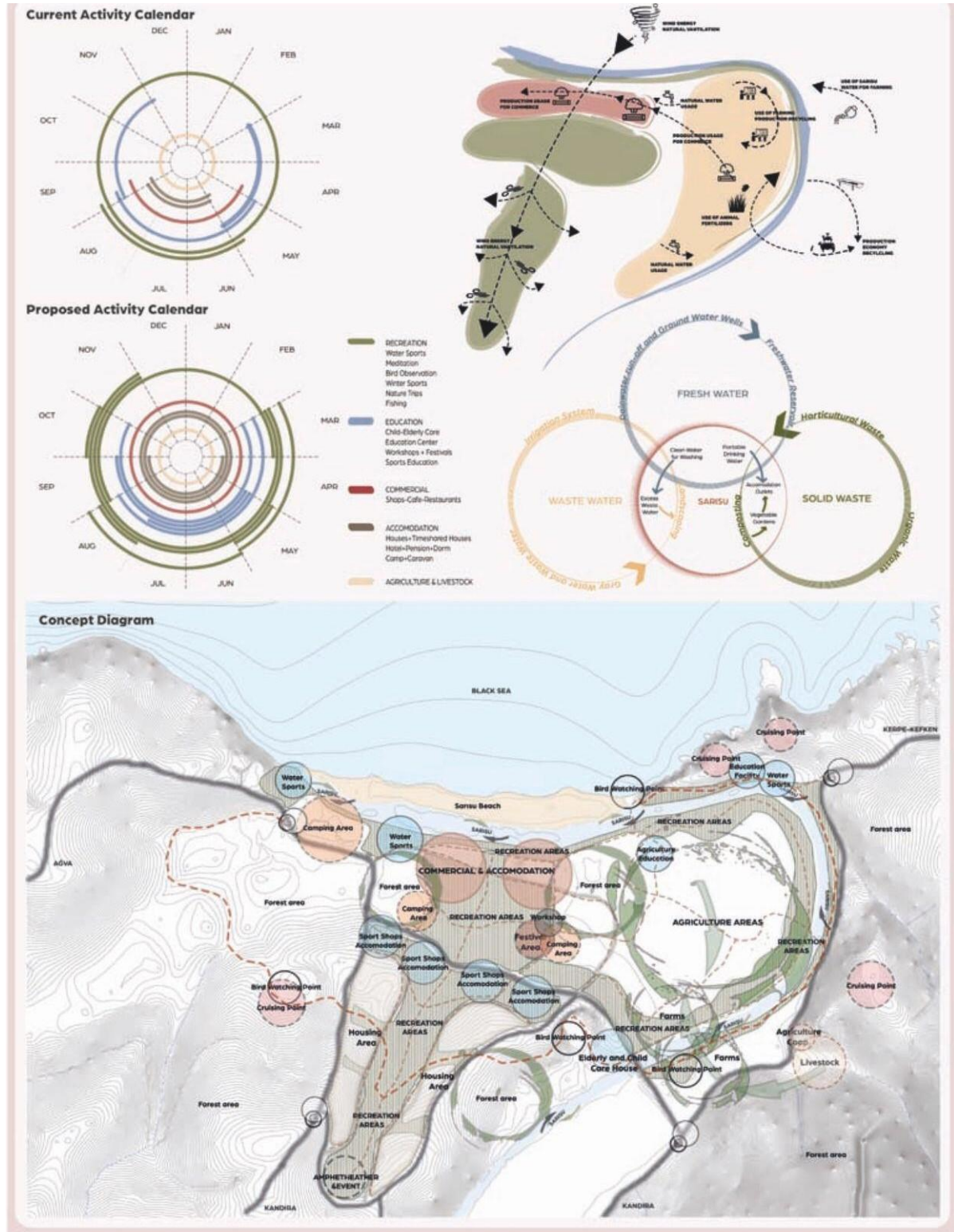


Figure 2. Design Theme and Concept

Recreation and sports training activities are homogeneously distributed over the area; agriculture and livestock activities are planned. Accommodation units located on both sides of the valley benefit from the view of the area and are separated from the recreation areas by providing privacy thanks to the topography and dense vegetation. It was aimed to design the functions added to the area with the rain water collection, solid waste accumulation and dirty water treatment systems located in the project area and its immediate surroundings, in a way that would cause minimum damage to the area, and project decisions were made on the basis of sustainability.

INDIVIDUAL STUDIES

This project was designed for the area to gain an identity as “Bulendi Healthy Life Sports and Tourism Village” and 3 basic principles were set out while designing the project. These principles are Local and ecological production, micro-economic development and social development. Local ecological production in the settlement is based on agriculture and animal husbandry, micro-economic development with Agrotourism, sports fields and the sale of local products from production, and social development with village squares, education centers, sports centers, agrotourism areas and public activity areas (Figure 3).



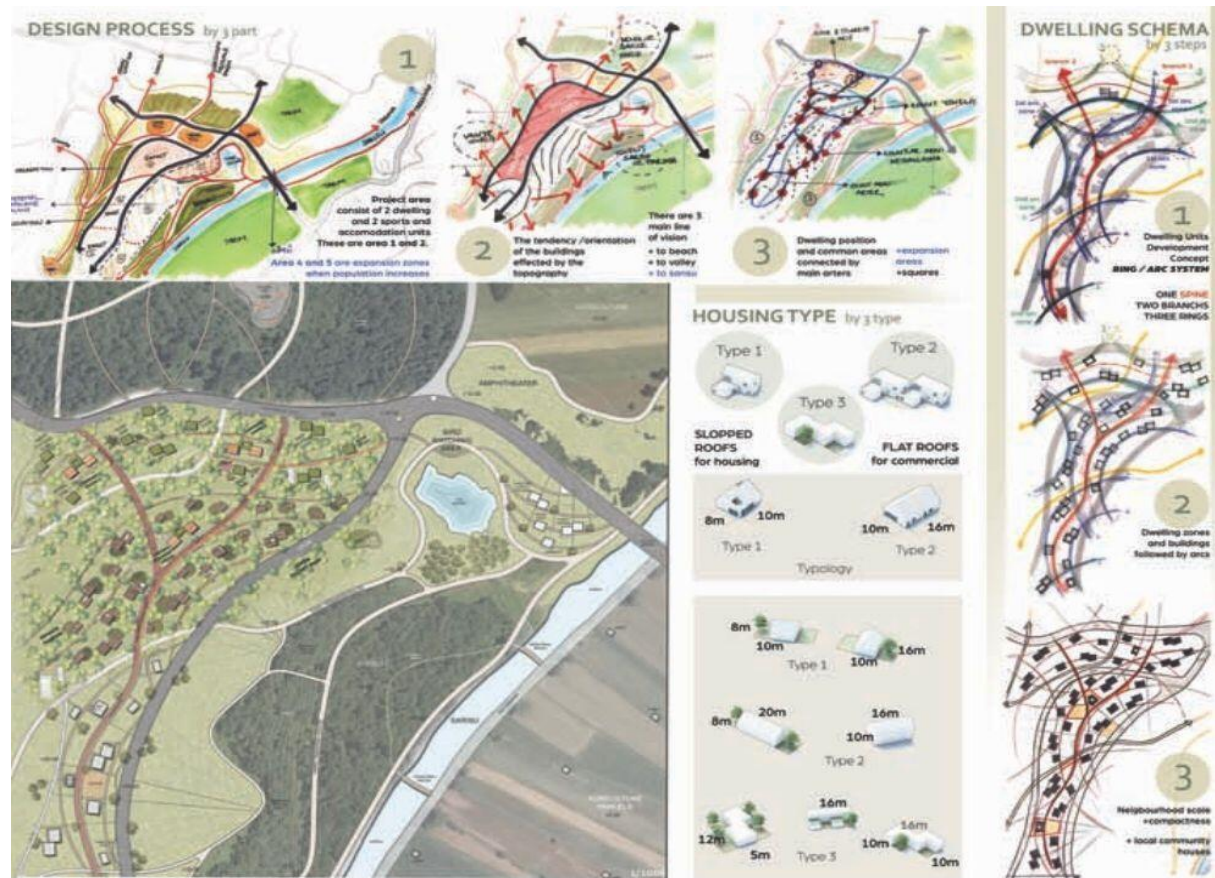
Figure 3. Design Study

Firstly, a pedestrian-oriented transportation network, in which public transportation serves the entire area, was designed. While one of the main pedestrian roads was designed as a green sports route extending along the valley considering the valley potential, the other main pedestrian path was designed as a line that ends with the utility point where the view provided by the valley slope can be used, taking into account the potential of the square. The town square, which is the main focal point; It has been designed as an agricultural square surrounded by product warehouses, food and beverage areas, village room and village cafe, suitable for workshops, and where common agriculture can be done.

Figure 3. Design Study

Firstly, a pedestrian-oriented transportation network, in which public transportation serves the entire area, was designed. While one of the main pedestrian roads was designed as a green sports route extending along the valley considering the valley potential, the other main pedestrian path was designed as a line that ends with the utility point where the view provided by the valley slope can be used, taking into account the potential of the square. The town square, which is the main focal point; It has been designed as an agricultural square surrounded by product warehouses, food and beverage areas, village room and village cafe, suitable for workshops, and where common agriculture can be done.

The secondary square was designed to support this square, and the pedestrian axis connecting these squares was later elevated and transformed into a city terrace. The residential areas, on the other hand, are designed and positioned as having private agricultural areas and orchards, hidden within the forest texture, overlooking the landscape and opening to the south. Ecologically natural and renewable energy sources (solar collector) were used in the project. Rainwater was used in the landscape, and the buildings were designed as units where natural lighting, natural ventilation and renewable energy are used in accordance with the climate. Materials with high water permeability are used in the floor coverings, and the landscape elements are designed in a way that is suitable for the existing flora of the area and has a high cover. The designs made as a result of the study, with a transportation system that emphasizes and uses the potentials of the area, focused on ecological access and accessibility; A participant-oriented design approach, in which the area is handled holistically with mixed uses, has been adopted. The integration of sports venues with the areas where an economic and social transformation is achieved, where the production of the area is supported and the products produced are consumed within the area. L



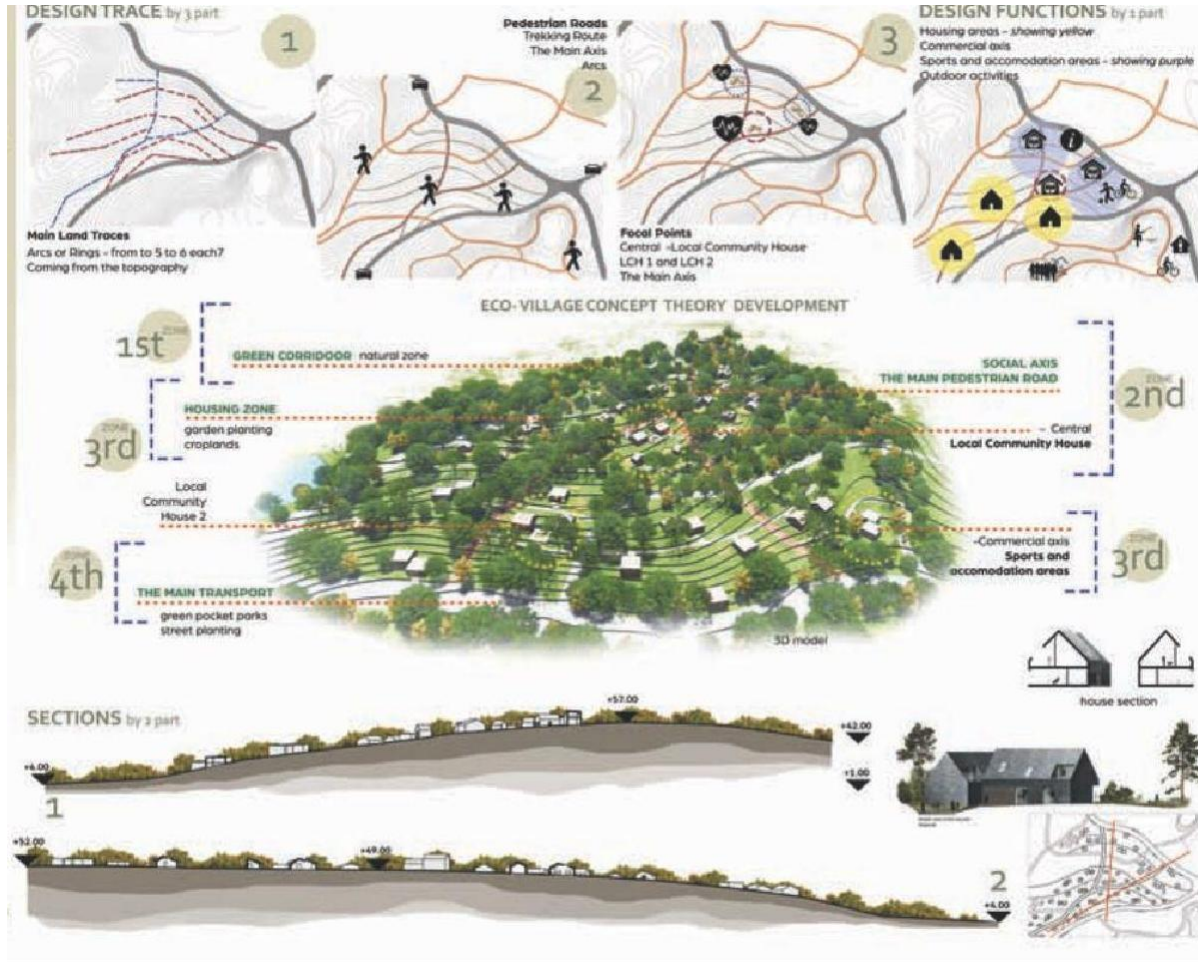


Figure 4. Design Study

In this project, which was designed as Bulendi Healthy Life Village and Ecological Anti-Toxic Sports Village in the Yenice Kaz Mountains of Çanakkale, it was tried to provide maximum aesthetics and functionality with minimum intervention to nature (Figure 4).

Bulendi Ecological Sports Village has been prepared by adopting the "3 Steps" principle in terms of all design stages. Inclination, elevation and aspect points were decided as settlement for the area; Areas that can take on the function of a square and can be united as neighborhoods have been decided. The area reaches the residential blocks from the valley hill with the slope, and then goes to the commercial units where sports and accommodation areas are located. For this reason, a "main backbone system" has been created to assist distribution within the area. The main spine is divided into two by branching into two trade zones. Arc (spring) or ring (circle) system, which follows the topography every 5-6 meters, provides transition between places that cannot be overcome by slope. The housing units articulated between the transitions follow a certain order; sits in harmony with the topography. The units separated by the springs pass from the green zone to the residence, from the main pedestrian axis to the green zone, from the green to the residence and from there to the carriageway in "3 steps". In terms of the building system, units of 8×10 meters and primary and secondary housing masses derived from these units were used in the area. The roofs of the commercial units are flat and green, the purpose here is to be less noticeable and more integrated when viewed from the valley.

The roofs of the houses are inclined to place solar panels, provide high ceilings and facilitate ventilation. Thanks to the openings in the residential buildings, it is possible to evaluate the location of the house with the view. The building height is maximum 7 meters and is designed as 2 floors. Since the concept is a sports village, there is a sports cafe, workshop, book shops and sports courts in the north of the project. In the commercial center, dining area, boutique hotel and information buildings were also preferred. The lighting, which is aimed to be in the project, was decided to be suitable for 3 purposes and the flooring materials were added to the project decisions. The main goal of the sports village project is to approach the field as calmly and harmoniously as possible without interfering with the usual.



The project area has been designed within the framework of both sustainable criteria and a living space that lives in all seasons. First of all, 9 main principles that will guide the design have been determined. These are production, experience, sharing, flow, diversity, continuity, strong relations with nature and accessible public spaces. Project area within the framework of determined principles and Anti-Toxic theme; It has been designed in an integrated way with three different types of housing areas, agricultural focal points where agricultural production is made at five points, indoor and outdoor sports areas, education units, trade units, child and elderly care home units, bird watching units and its route.



Figure 5. Design Study



The first residential area is planned to be integrated with both common agricultural areas and public areas, as well as private gardens where agriculture can be done. The second residential area is planned as a living environment with open sports areas on both sides of the trekking route, while the third residential areas are more concentrated in spaces with their own private areas (Figure 5).

The wooden platform provides the main connection between the public open spaces, the commercial and agricultural areas in the front and the sports training units and residential areas in the rear. It is aimed that the bird watching units consisting of tree houses will be integrated with the trekking route and create a special area within the forest area. Housing units are designed to derive from a main unit, which is basically produced from a seventy square meter unit, by combining it in different ways. Wood texture and natural stones were used as the construction materials of these units. For the materials used in the design of the residential units, local products with a low carbon footprint, natural and renewable resources were used. For health and safety, it is planned to use dry and hot quality control and non-toxic materials. In order to use the energy in the most efficient way, passive solar design and solar panels providing full insulation have been proposed. It has been ensured that food and garden wastes are used as compost for agricultural areas. In order to recycle the gray water, a water usage system for collecting rainwater harvesting, compost toilets and natural waste water treatment has been designed. As a result of the study, the designs and planning were planned with a design approach that does not break with nature, integrates different functions with a bicycle, pedestrian and public transportation-oriented transportation system, uses natural elements, and is compatible with local characteristics.

RESULT

With the ecological design approach followed throughout the process from the analysis stages of the project to the individual works, Bulendı Sağlıklı Yaşam village and Ecological Anti-oxide sports village work in an integrated manner. Balıkesir-İzmir Highway offers an important opportunity in the context of creating an interconnection that will enable the development of rural tourism in the region, especially on the coastline. All individual works have been created to support these resources and have been transformed into site-specific, sustainable, self-contained design models. The designed Bulendi Healthy Living models plan a sustainable future if the production and consumption balances are achieved. As a result, all these studies have been completed in accordance with the aims targeted throughout the process and have revealed the potentials of Çanakkale. “Bulendi Healthy Life Village and Anti-Toxic Ecological Sports Village”, designed within the framework of the elements supporting the development of the Anti-Toxic Sports Village organization and sustainable design criteria, is a guide for future studies for the sustainable development of the region.